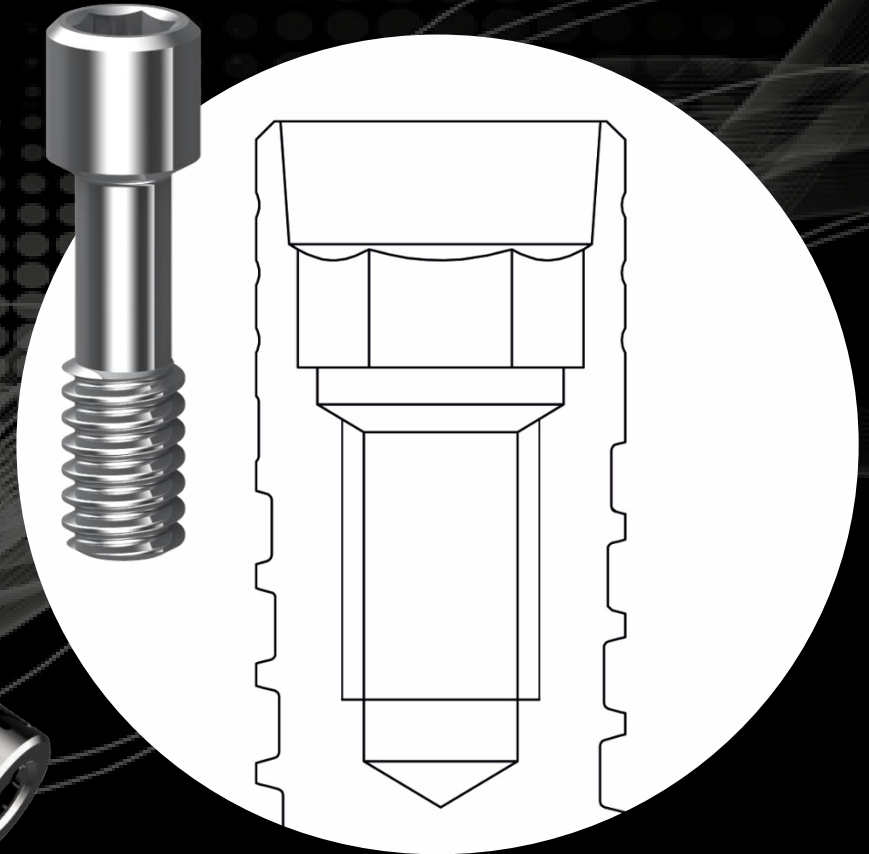


# CONNESSIONE CONICA

4°

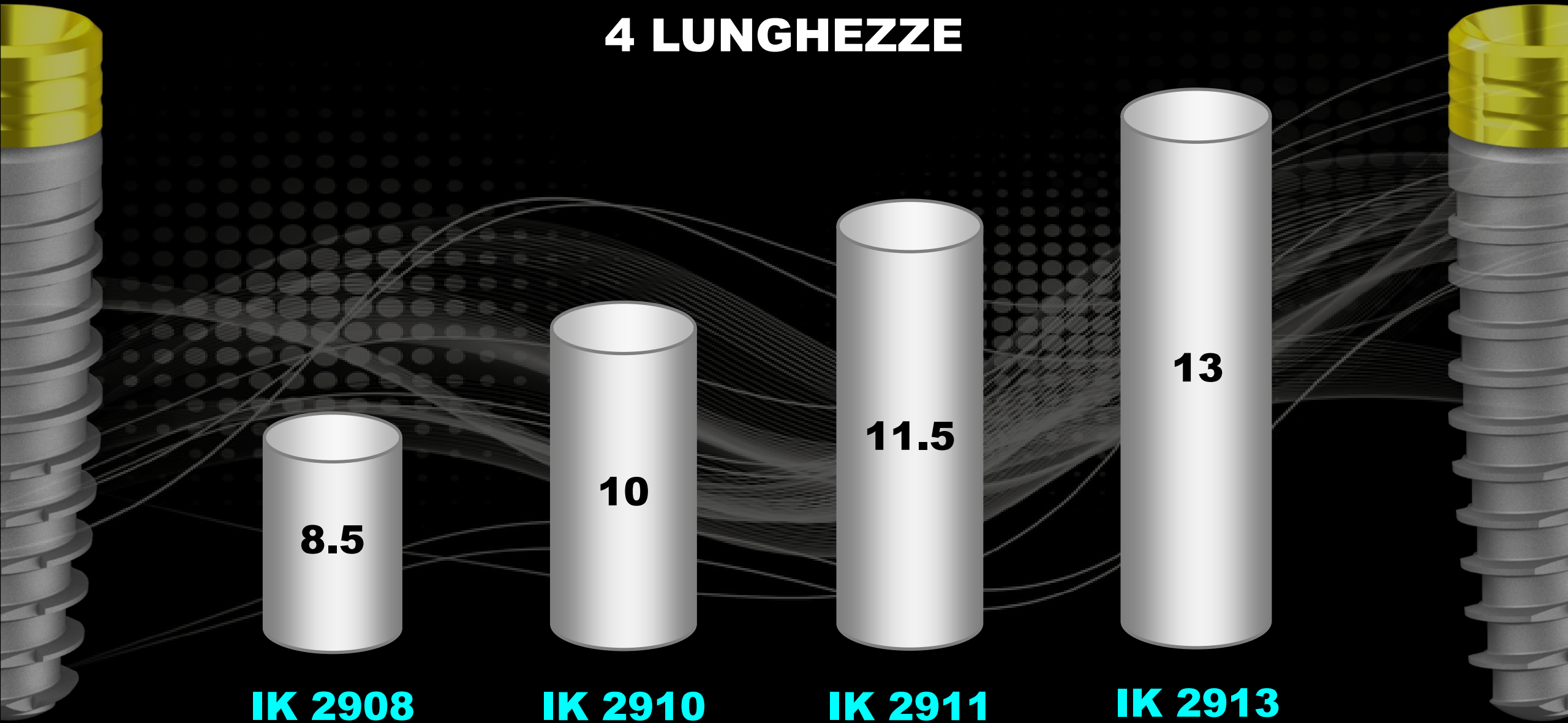
35 Ncm  
**MAX**

ESAGONO 2.0 mm  
Vite 1.6 mm



# IMPIANTO MOUNTERLESS

4 LUNGHEZZE



**IK 2908**

**IK 2910**

**IK 2911**

**IK 2913**

# CONFEZIONAMENTO

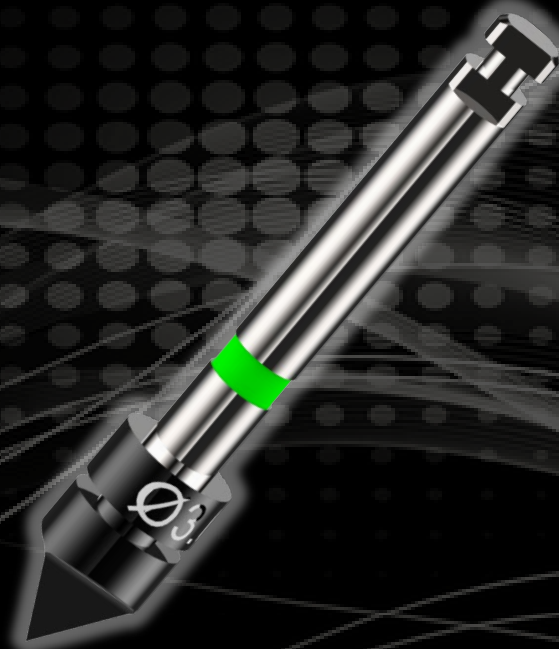


The background is a collage of surgical-related images. On the left, there's a close-up of various surgical instruments like forceps and scissors on a green tray. On the right, a surgeon in full green scrubs, a cap, and a mask is visible. The entire image has a dark teal overlay with white wavy lines and a grid pattern.

# **STRUMENTARIO CHIRURGICO**

# STRUMENTARIO CHIRURGICO

**FIS30**



**CS15**



**KS30**

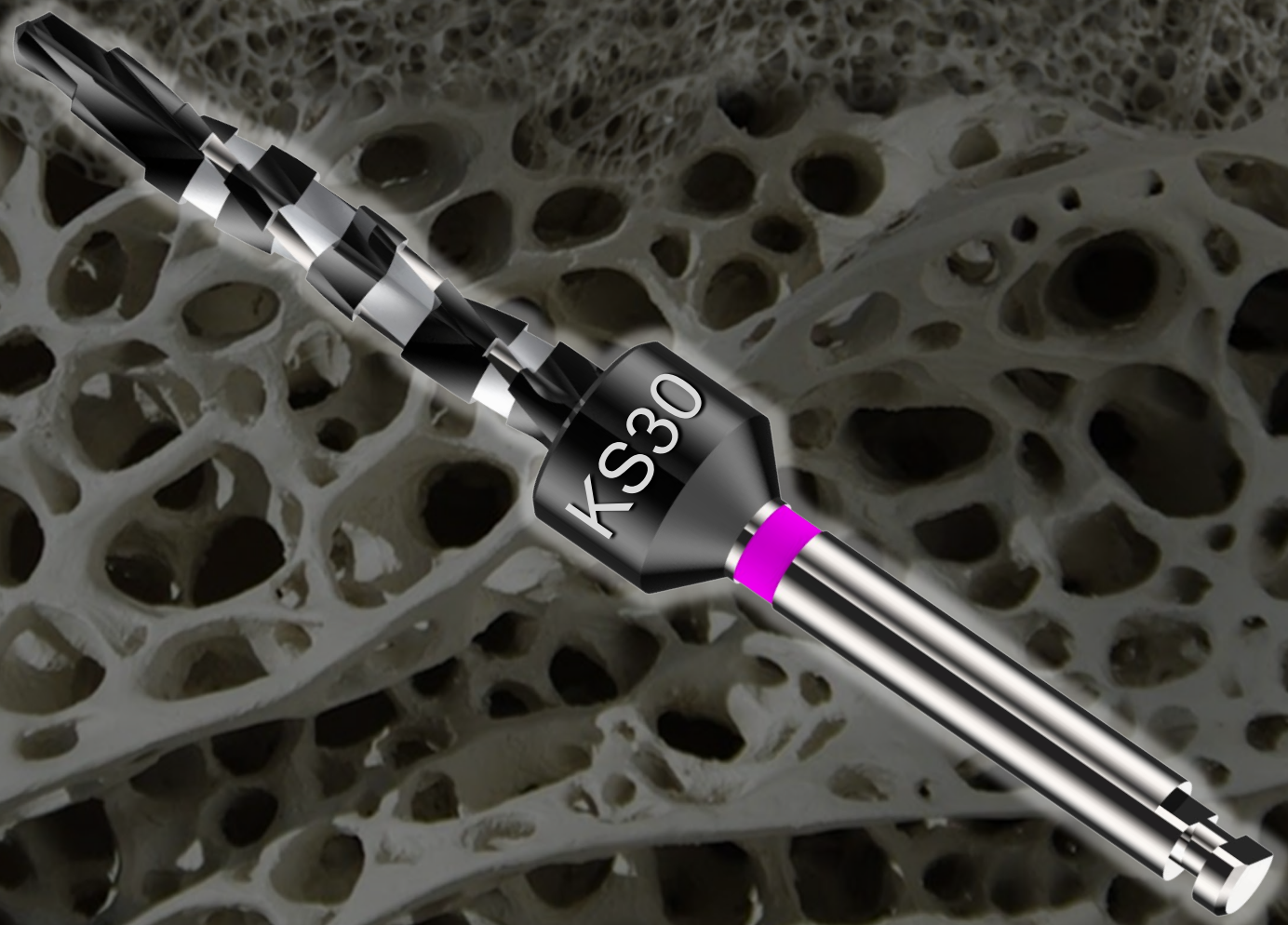


**SPALLA  
LANCEOLATA**

**PILOTA  
CILINDRICA Ø1.5**

**FINALE  
PREFORMATA Ø2.6**

# ROTAZIONE ORARIA e ANTIORARIA



# STRUMENTARIO CHIRURGICO

**ACK2 S**



**ACK2 L**



**PCK2 S**



**PCK2 L**



**AVVITATORI  
CONTRANGOLO**

**AVVITATORI  
CRICCHETTO**

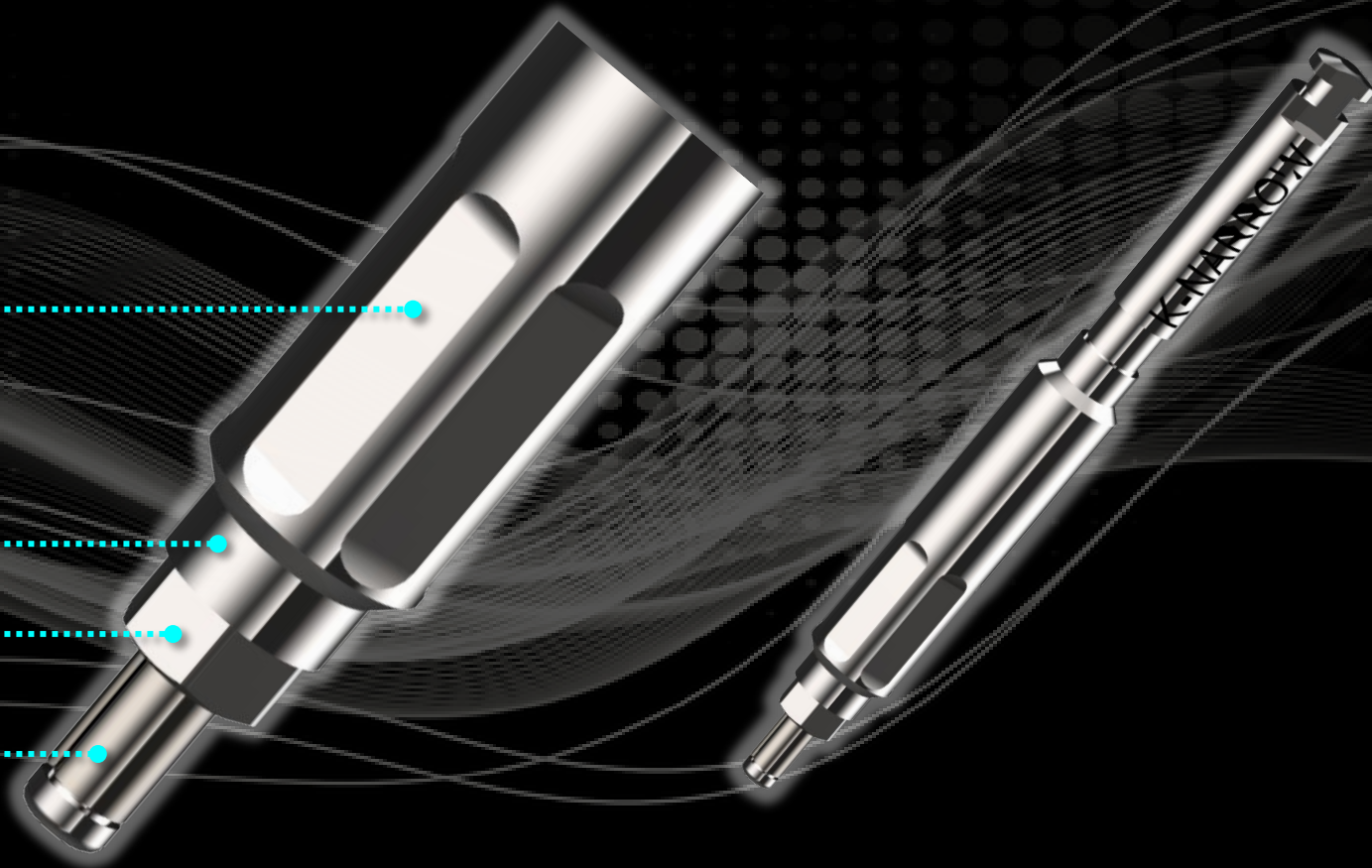
# STRUMENTARIO CHIRURGICO


**CONTROLLO FASE**

**FALSO CONO**

**ESAGONO**

**RITENZIONE**





# COMPONENTISTICA PROTESICA

# COMPONENTISTICA PROTESICA



**TRANSFER  
ANALOGICO**

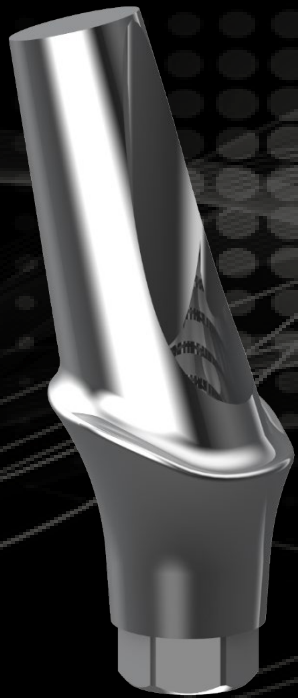


**ANALOGO  
DIGITALE**

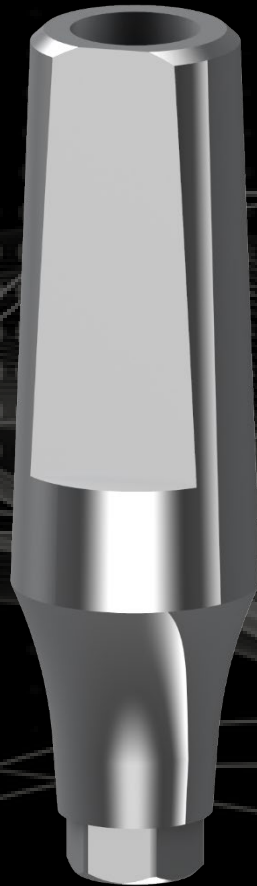


**PILASTRO  
GUARIGIONE**

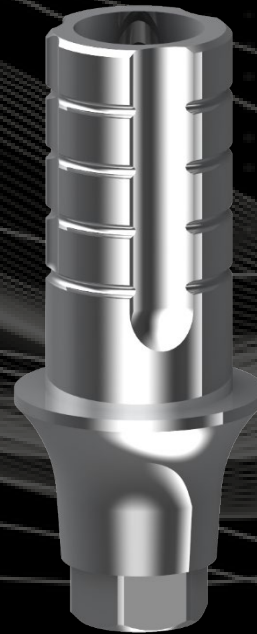
# COMPONENTISTICA PROTESICA



**TITANIO  
ANGOLATI**



**TITANIO  
DIRITTI**



**LINK  
INCOLLAGGIO**



**UCLA  
CoCr**



**PILASTRO  
EQUATOR**

# STRUMENTARIO PROTESICO

**DMRP**  
**120L**



**DMRP**  
**120S**



**ACESTR**



**DRIVERS MANUALI ES. 1.20**

**ESTRATTORE MANUALE**

# RIMOZIONE FACILITATA ABUTMENT



**DRIVERS  
MANUALI  
ES. 1.20**



**ESTRATTORE  
MANUALE**

